



TRM 823/833/885/PVS15

P/N : 300828-101

SUBREV : K

DRAWN BY : C THOMSON

DATE : 21 MAR 2012

SHEET 1 OF 9

D

C

B

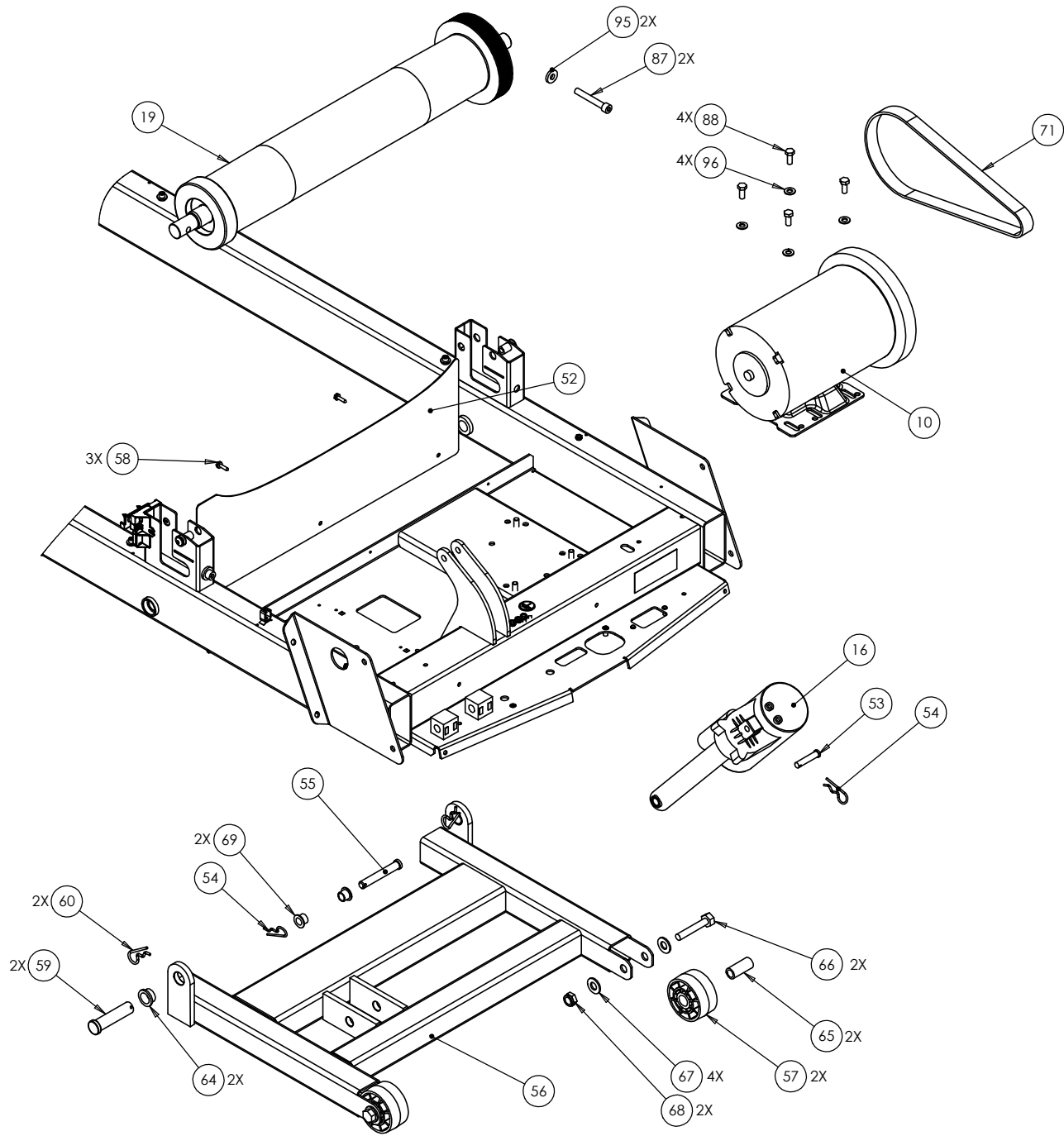
A

4

3

2

1

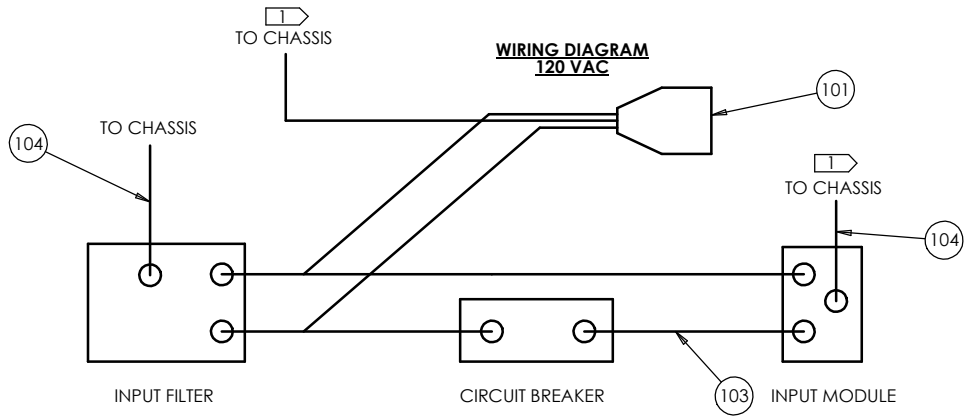
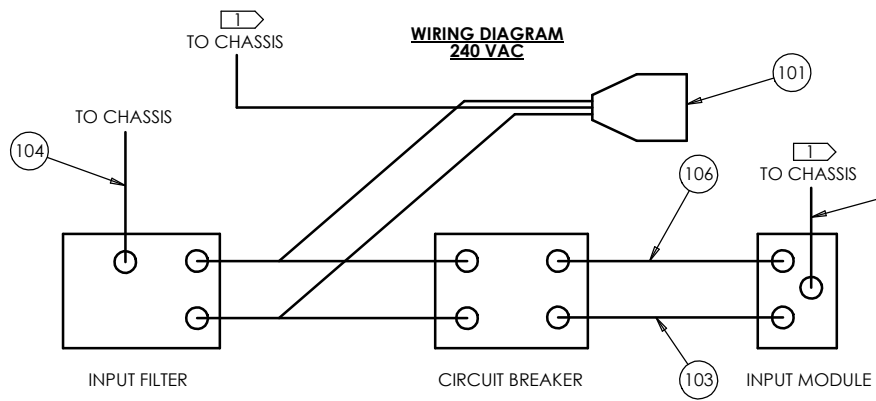


D

C

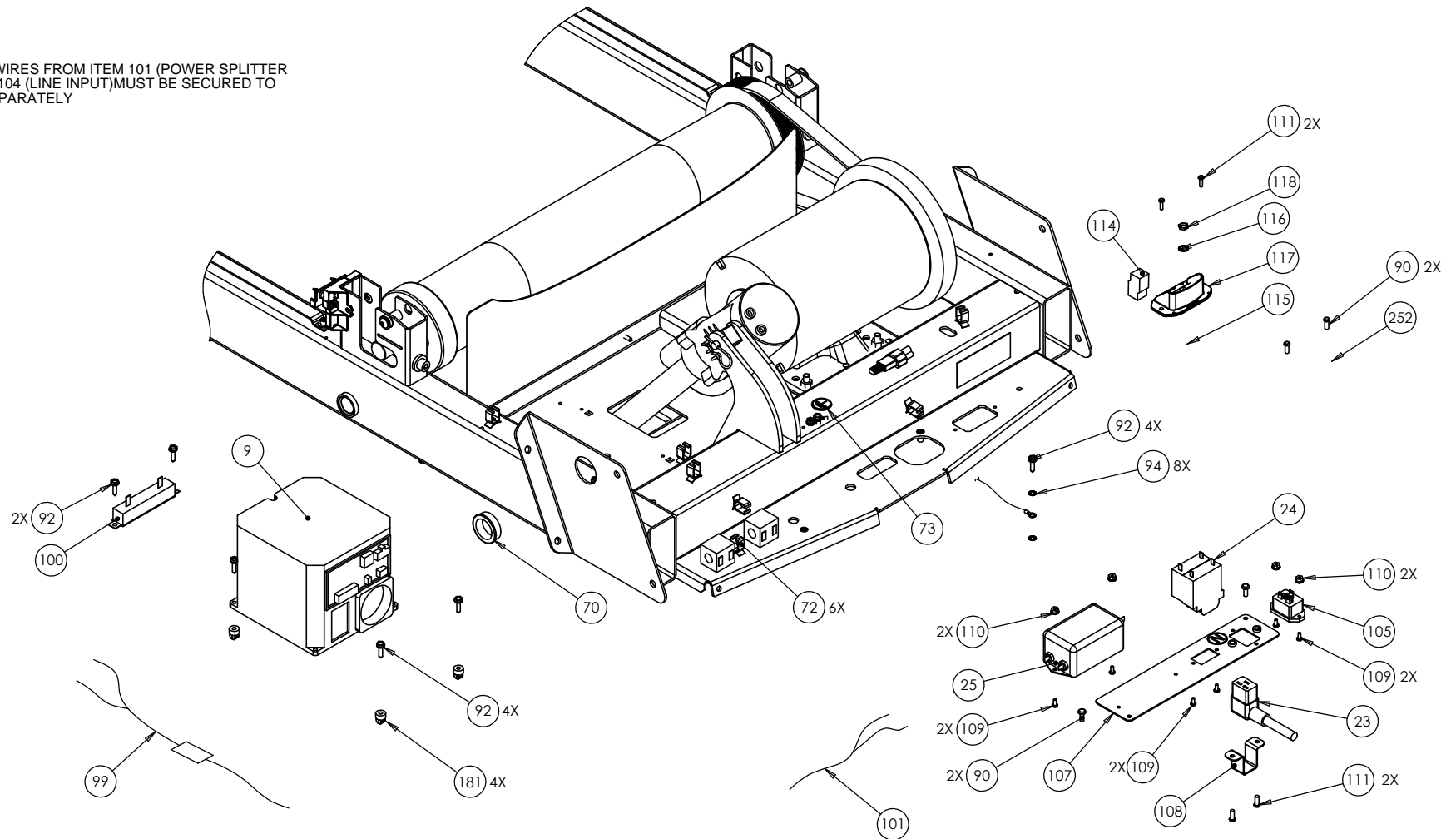
B

A



NOTES:

1 GROUND WIRES FROM ITEM 101 (POWER SPLITTER AND ITEM 104 (LINE INPUT) MUST BE SECURED TO FRAME SEPARATELY



D

C

B

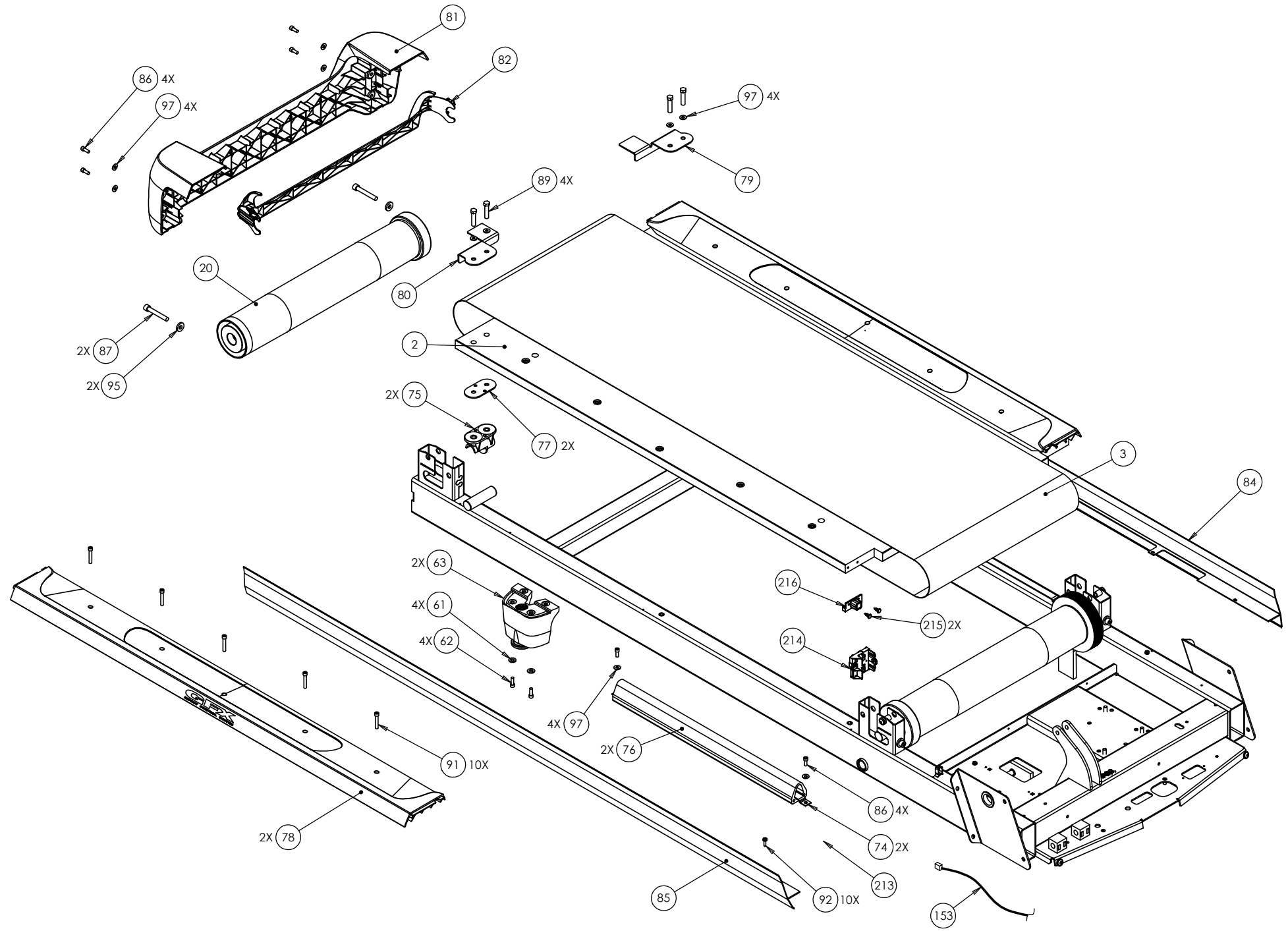
A

4

3

2

1

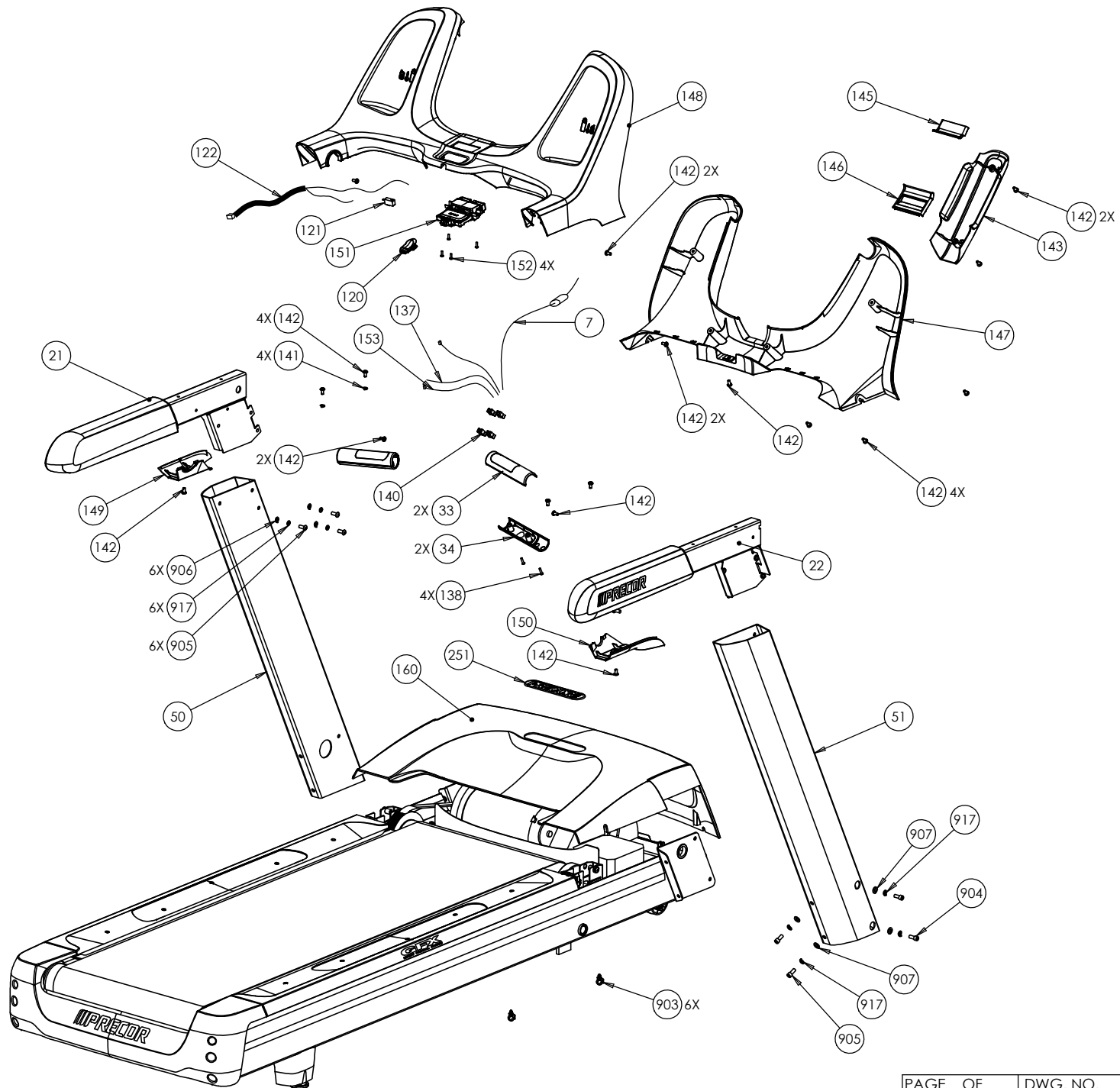


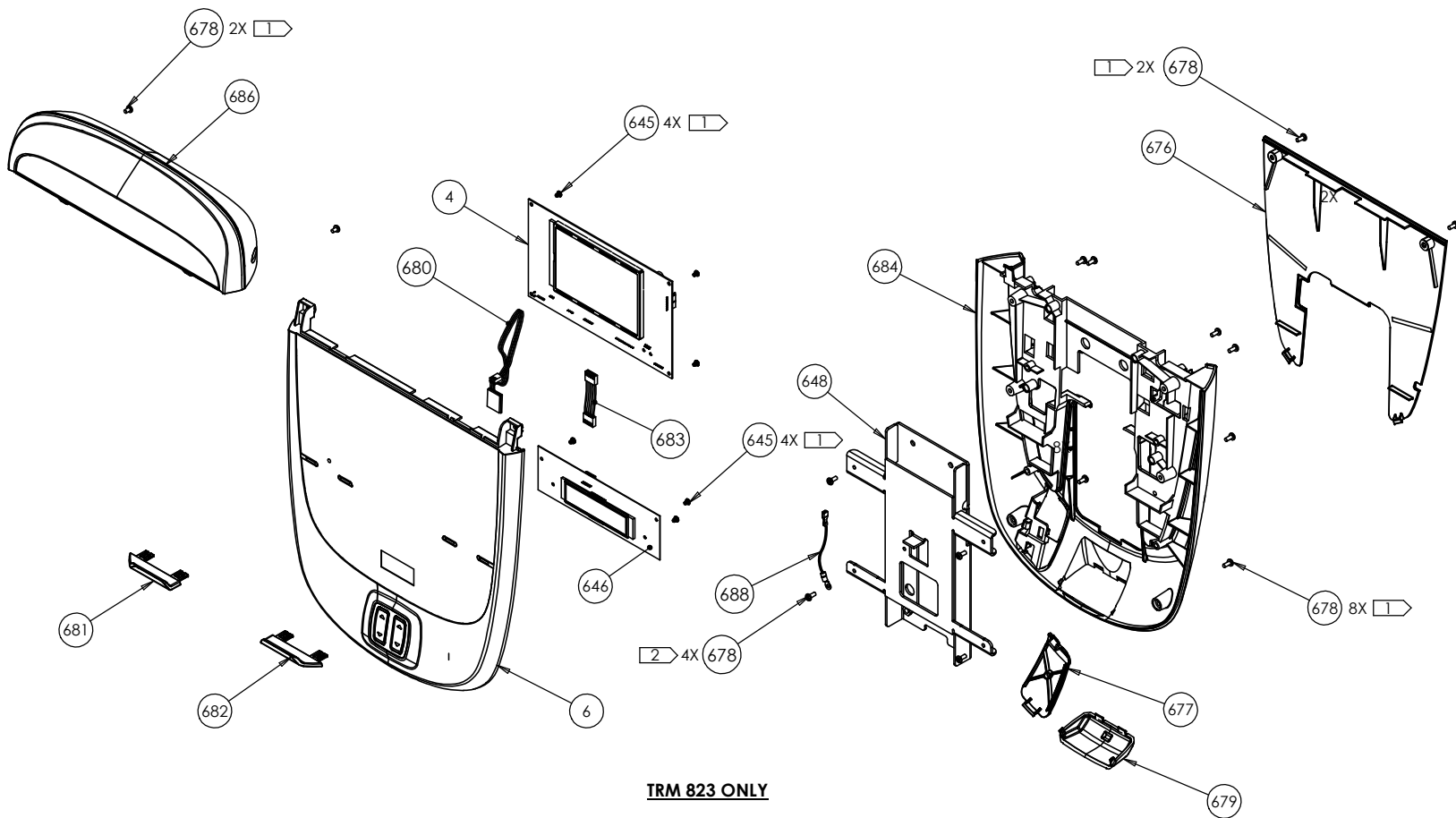
4

3

2

1

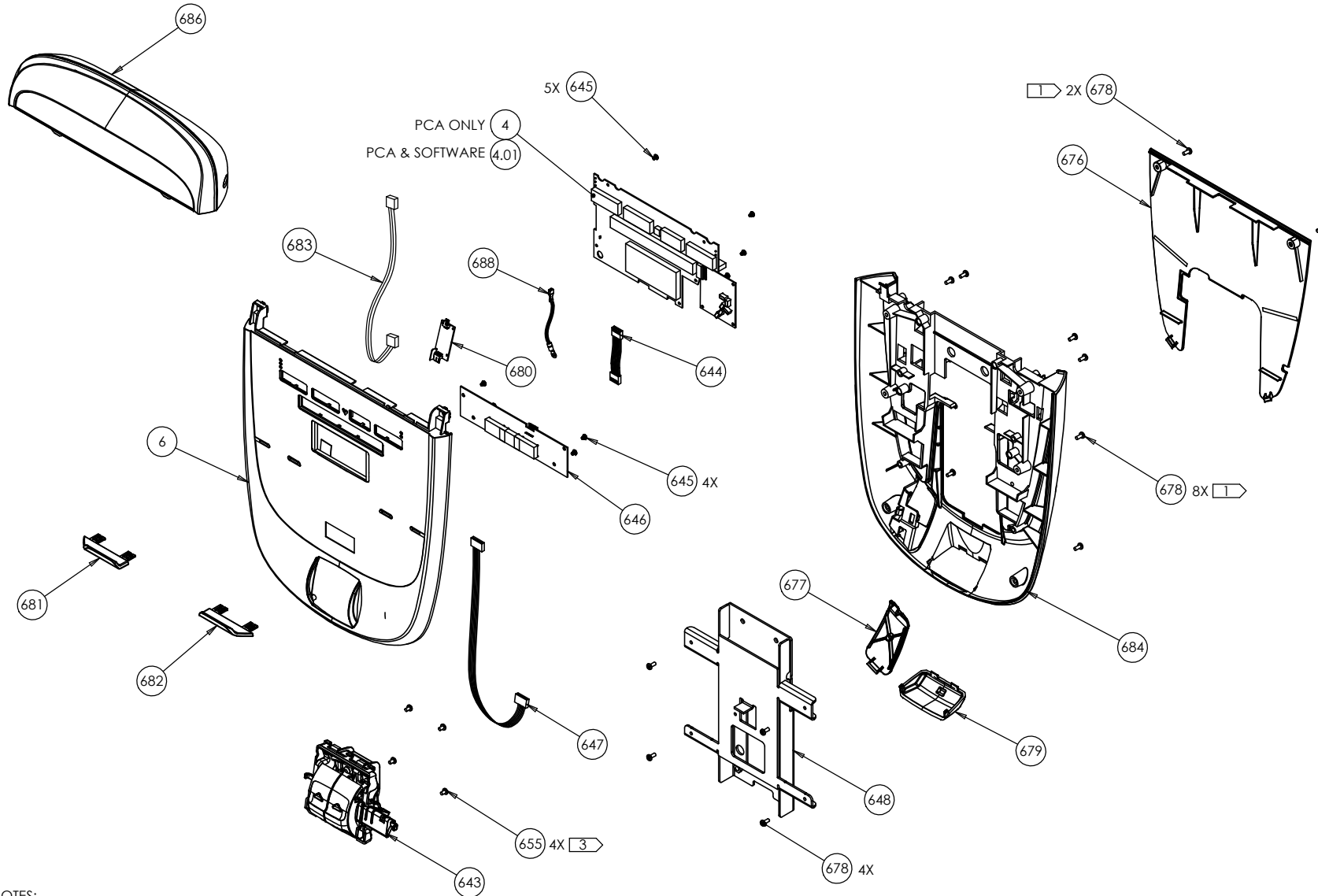




TRM 823 ONLY

NOTE:

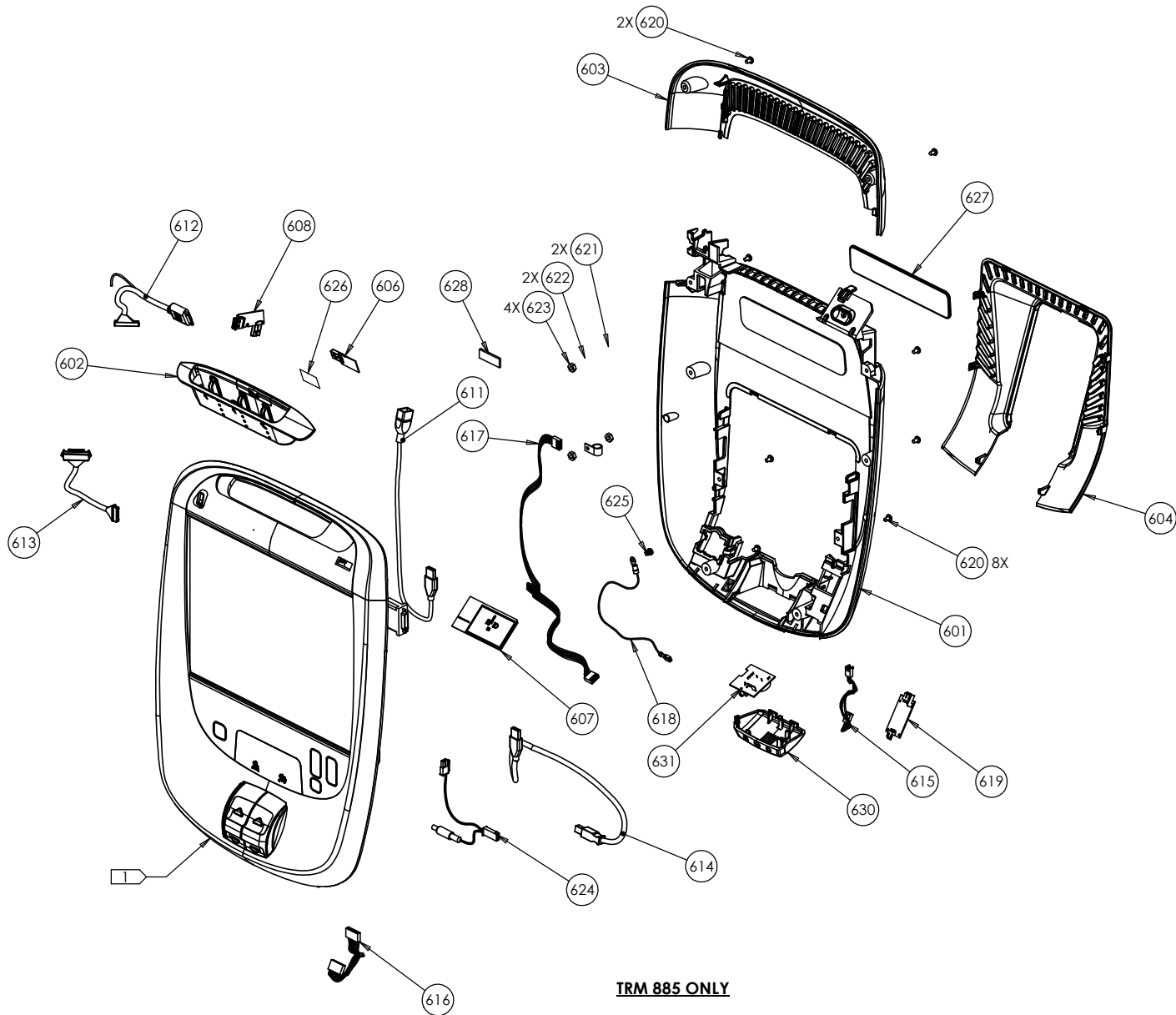
- 1 TORQUE TO 10 IN-LB ± 1 IN-LB.
- 2 TORQUE TO 19 IN-LB ± 1 IN-LB.



NOTES:

- 1 TORQUE TO 10 IN-LB ±1 IN-LB.
- 2 TORQUE TO 19 IN-LB ±1 IN-LB.
- 3 TORQUE TO 6 IN-LB, MAX.

TRM 833 ONLY



TRM 885 ONLY

NOTES:

 THIS IS A COMPLETE DISPLAY ASSEMBLY, PACKAGED FOR SHIPPING.
 ORDER BUBBLE #650 FOR WARRANTY REPLACEMENTS, OR ANY RELATED PART NOT SHOWN SEPARATELY.
 ORDER BUBBLE #600 FOR PURCHASED REPLACEMENTS, OR ANY RELATED PART NOT SHOWN SEPARATELY.

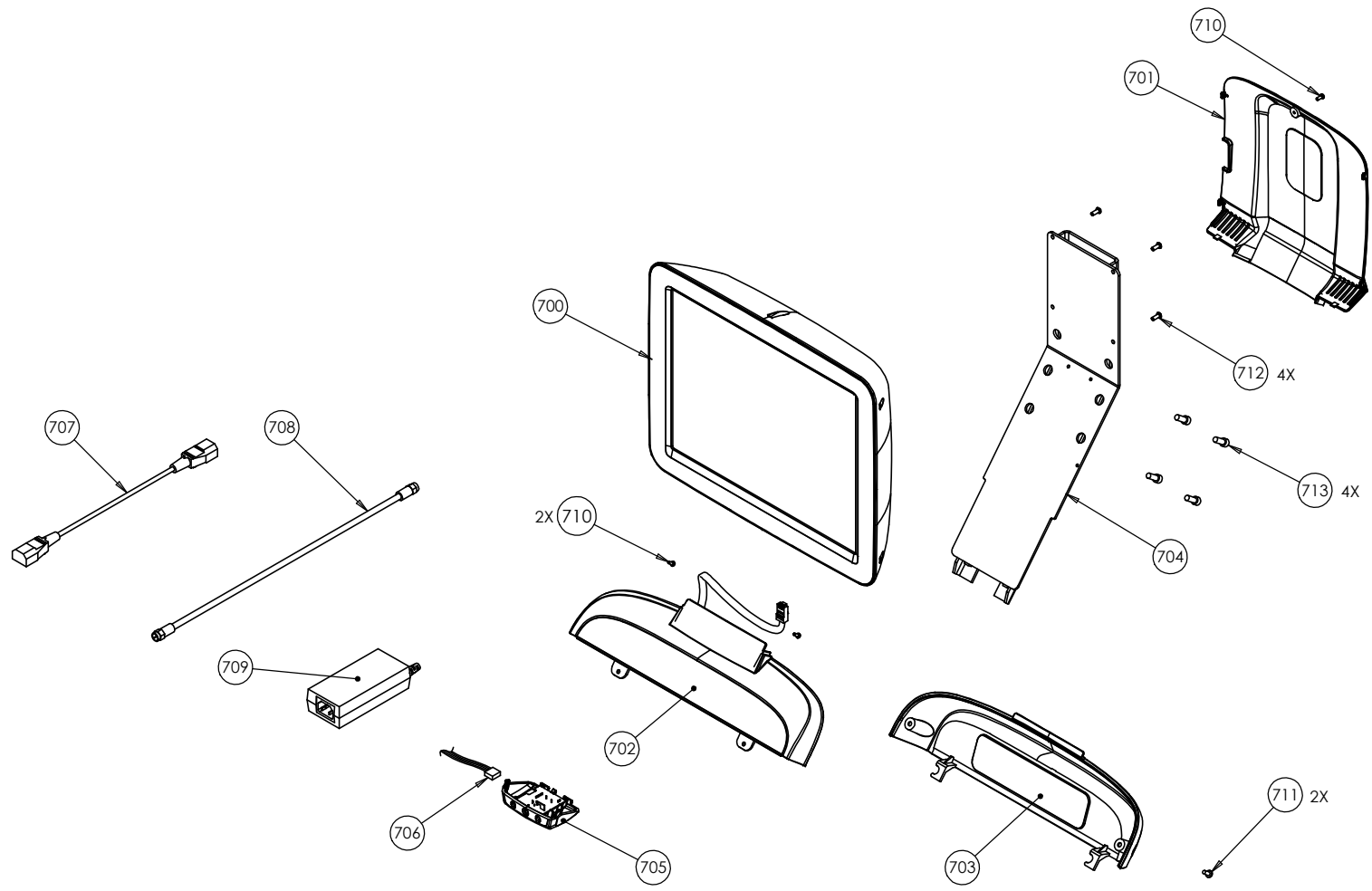
PAGE	OF	DWG. NO.	SUBREV
8	9	300828-101	K

4

3

2

1



PVS15